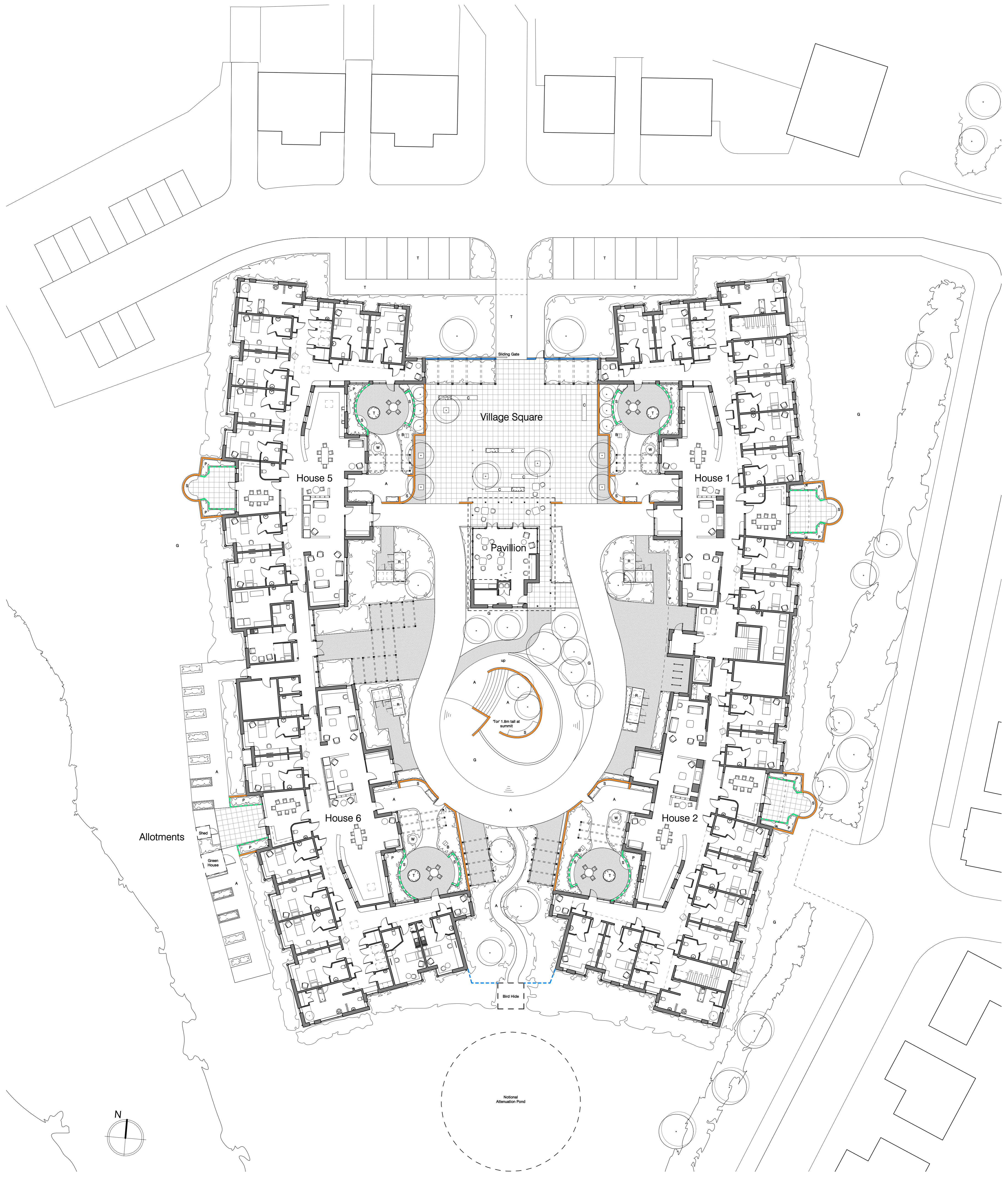


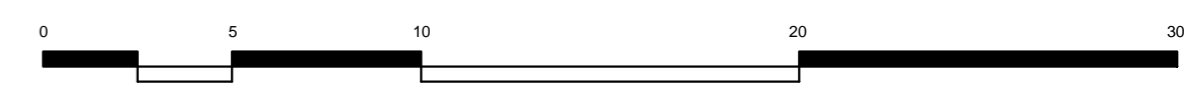
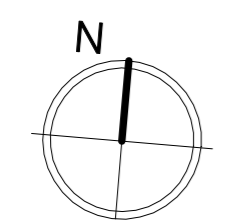
CRICK ROAD - CARE HOME DEVELOPMENT





- Landscaping materials**
- Rectangular concrete flag paving with flush concrete cobble kerbs to (other) hard and soft landscaping surfaces.
 - Concrete block paving with flush concrete cobble kerbs to (other) hard and soft landscaping surfaces.
 - A** Resin bound gravel paving with flush concrete cobble kerbs to (other) hard and soft landscaping surfaces.
 - T** Fine grade tarmac (with rolled-in chippings to footpaths).
 - Shrub planting.
 - G** Grass planting.
- Boundary Types**
- 1.3m tall rubble stone wall with vertical stone capping with 1.3m tall galvanised and PPC decorative metal gates.
 - 2.25m tall rubble stone wall with concrete capping with 1.3m tall galvanised and PPC decorative metal pedestrian gate.
 - 2.1m tall green plastic coated weld-mesh fencing (boundary to be confirmed).
 - 0.9m tall timber-clad formwork (for built-in timber bench seating).

- Symbols**
- Trees (set in grilles in areas of hard landscaping).
 - Cycle stands.
 - Bollards with integrated lighting.
 - S** Built-in timber bench seating.
 - P** Timber formed raised planter (cladding and profile to match building cladding).
 - W** Proprietary water feature.
 - B** Proprietary bird table.
 - C** Proprietary combined bench and raised planter street furniture.
 - R** Refuse/recycle stores to be 1.2m tall timber clad enclosures (cladding and profile to match building cladding) with timber slatted doors. Timber formed raised planter as roof to structure.
 - M** Movable wheelchair accessible planter.
 - Green oak pergola structure with integrated galvanised steel rods and cables for plant growth.



pentan
architects

22 Cathedral Road
Cardiff CF11 9LJ
t: 029 2030 9010
info@pentan.co.uk

Project
Crick Road Care Home
Client
Monmouthshire CC
Drawing Title
Site Plan

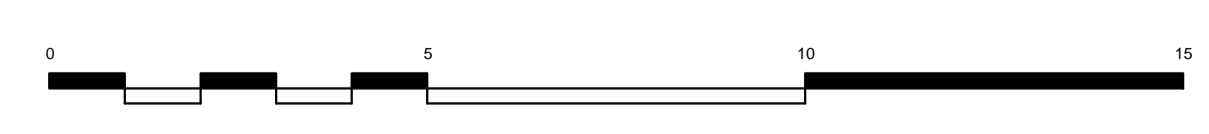
Date
10/05/2018
Scale
1 : 200 @ A1
Drawing No.
3460 SK 03
Rev.

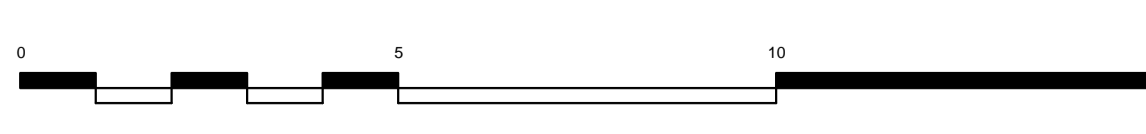


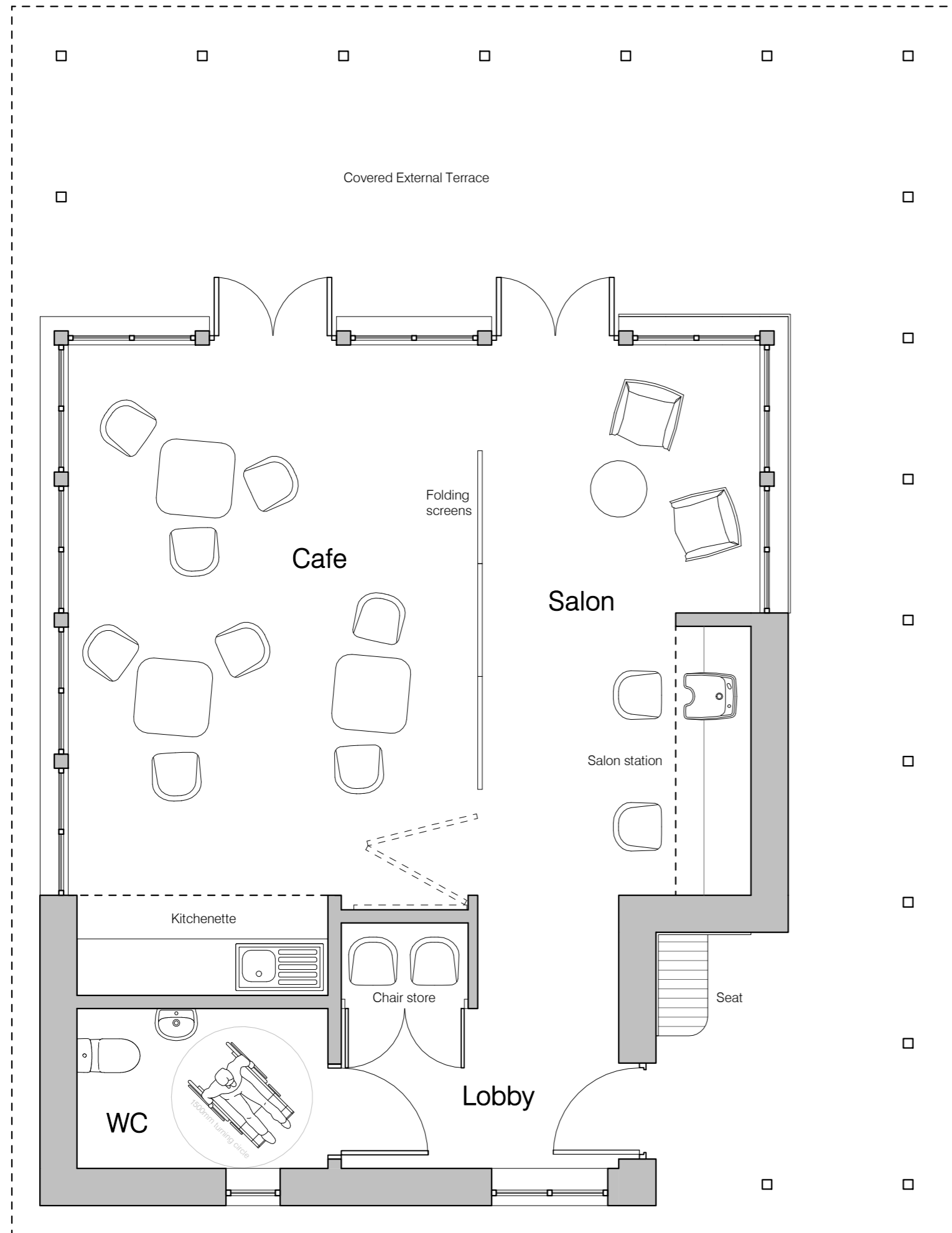
Ground Floor Plan
1:100



First Floor Plan
1:100



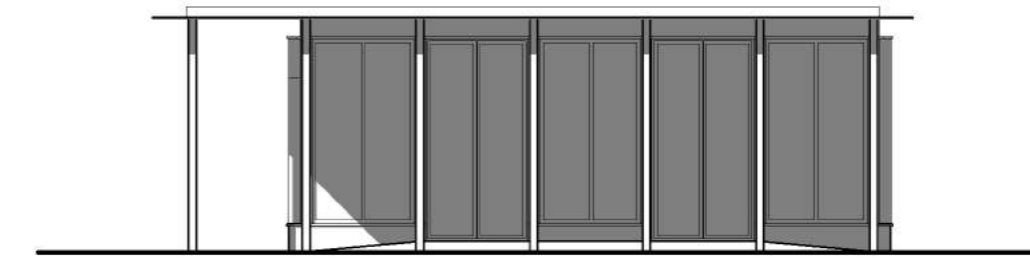




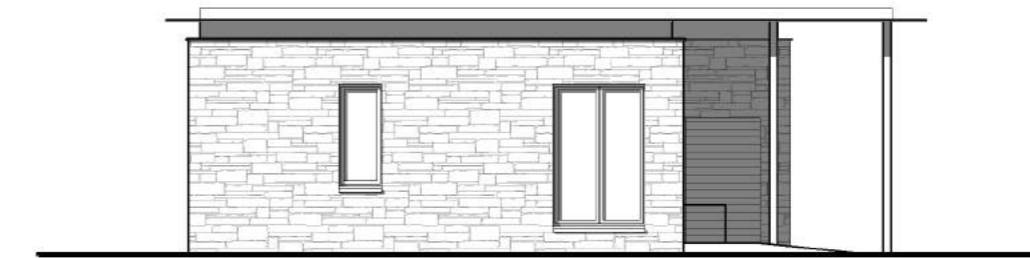
Ground Floor Plan
1 : 50



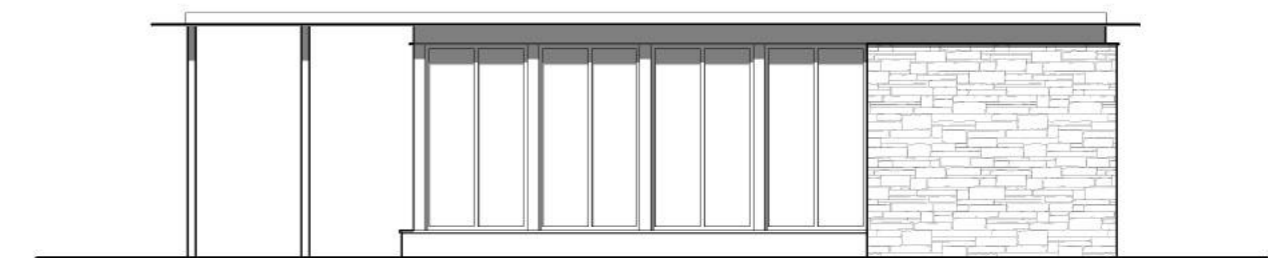
East Elevation
1 : 100



North Elevation
1 : 100



South Elevation
1 : 100



West Elevation
1 : 100

Materials Key
1 : 100

WALLS



Coursed local stone walling with mortar joints.
65mm reconstituted stone sills.
150mm reconstituted stone reveals to selected windows.

ROOFS

Singly-ply membrane flat roofs.
Lightweight simple sedum green roof system.
Treated natural zinc rainwater goods.

WINDOWS AND DOORS

Composite units with PPC aluminium externally and timber internally. Allow for three colours.
Conservation style rooflights in dark grey.

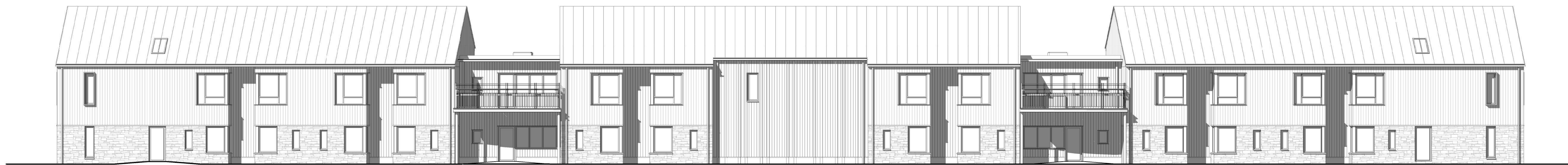
pentan
architects

22 Cathedral Road
Cardiff CF11 9LJ

t: 029 2030 9010
info@pentan.co.uk



| | |
|--|----------------------------|
| Project Crick Road Care Home | Date 05/02/18 |
| Client Monmouthshire CC | Scale As indicated @ A2 |
| Drawing Title Pavilion - General Arrangement and Elevations | Drawing No. 3640 SK 12 |
| NOTES Do not scale. All dimensions are in millimetres unless stated otherwise | Rev. |



Block A- East Elevation
1:100



Block A- West Elevation
1:100




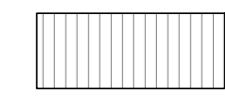
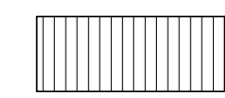
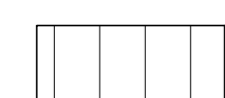
Block A- North Elevation
1:100



Block A- South Elevation
1:100

Materials Key
1:100

WALLS

-  Coursed local stone walling with mortar joints.
60mm reconstructed stone sills.
150mm reconstructed stone reveals to selected windows.
-  Natural timber cladding (inc. soffits and eaves boards).
FSC Sweet Chestnut in vertical half-lap profile.
Jamb formers to match cladding.
PPC aluminium trim, sills and heads.
-  Black timber cladding.
FSC Sweet Chestnut in vertical half-lap profile.
Jamb formers to match cladding.
PPC aluminium trim, sills and heads.
-  Copper/metal cladding.
Pre-weathered Douglas green copper.
Pre-weathered roof brown copper.
Bronze (brown-red) copper.
Projecting reveals to selected windows.

ROOFS

- Natural zinc pitched roofs in standard standing seam profile.
- Singly-ply membrane flat roofs.
- Lightweight simple sedum green roof system.
- Treated natural zinc rainwater goods.

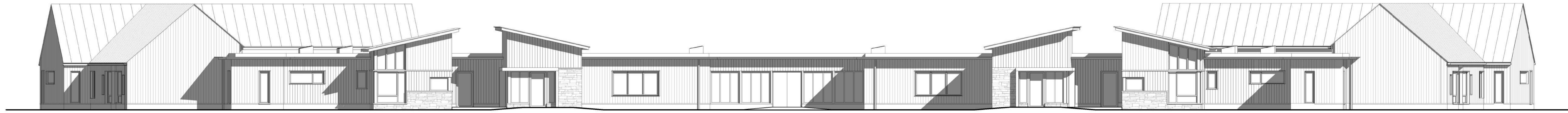
WINDOWS AND DOORS

- Composite units with PPC aluminium externally and timber internally. Allow for three colours.
- Conservation style rooflights in dark grey.

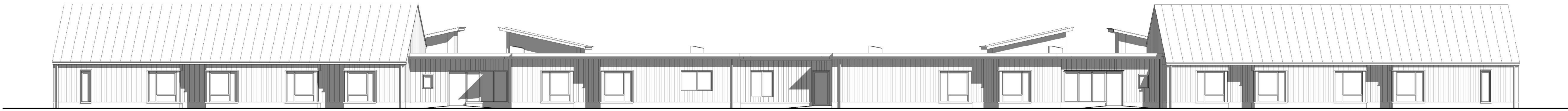
TERRACES

- Composite non-slip decking.
- Galvanised and PPC steel balustrades with hardwood handrails and leaning rails.

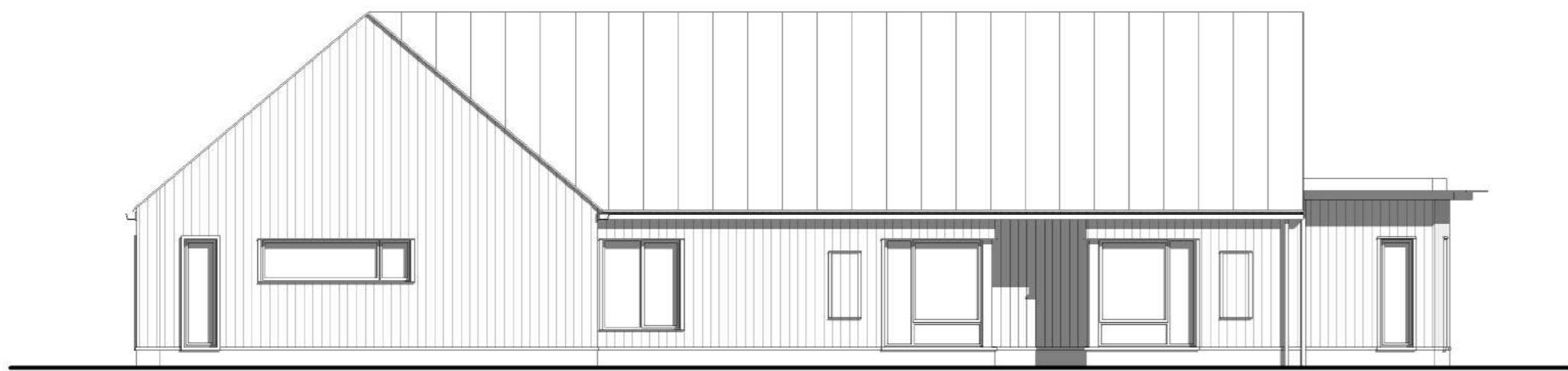




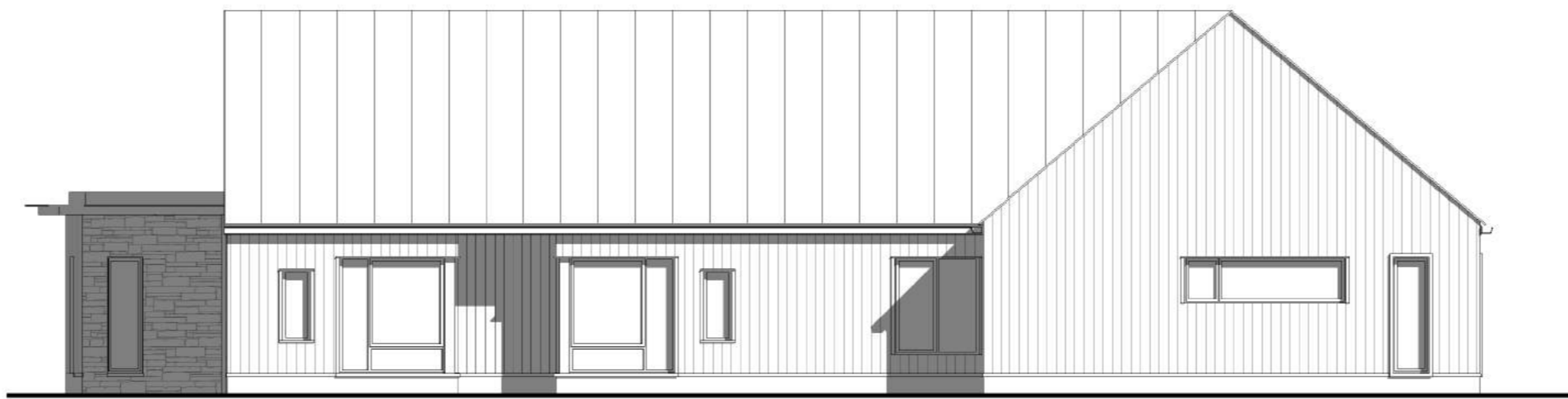
Block B - East Elevation
1 : 100



Block B - West Elevation
1 : 100





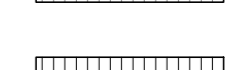

Block B - South Elevation
1 : 100



Block B - North Elevation
1 : 100

Materials Key
1 : 100

WALLS

-  Coursed local stone walling with mortar joints.
60mm reconstructed stone sills.
150mm reconstructed stone reveals to selected windows.
-  Natural timber cladding (inc. soffits and eaves boards).
FSC Sheet Chestnut in vertical half-lap profile.
Jamb formers to match cladding.
PVC aluminium trim, sills and heads.
-  Black timber cladding.
FSC Sheet Chestnut in vertical half-lap profile.
Jamb formers to match cladding.
PVC aluminium trim, sills and heads.
-  Copper metal cladding.
Pre-weathered 14-ply green copper.
Pre-weathered 14-ply brown copper.
Bronze (brown-red) copper.
Projecting reveals to selected windows.

ROOFS

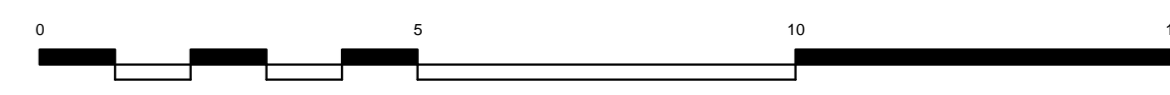
- Natural zinc pitched roofs in standard standing seam profile.
- Singly-ply membrane flat roofs.
- Lightweight simple section green roof system.
- Treated natural zinc rainwater goods.

WINDOWS AND DOORS

- Composite units with PVC aluminium externally and timber internally. Allow for three colours.
- Conservation style rooflights in dark grey.

TERRACES

- Composite non-slip decking.
- Galvanised and PVC steel balustrades with hardwood handrails and leaning rails.





- Landscaping materials**
- Rectangular concrete flag paving with flush concrete cobble kerbs to (other) hard and soft landscaping surfaces.
 - Concrete block paving with flush concrete cobble kerbs to (other) hard and soft landscaping surfaces.
 - A** Resin bound gravel paving with flush concrete cobble kerbs to (other) hard and soft landscaping surfaces.
 - T** Fine grade tarmac (with rolled-in chippings to footpaths).
 - Shrub planting.
 - G** Grass planting.
- Boundary Types**
- 1.3m tall rubble stone wall with vertical stone capping with 1.3m tall galvanised and PPC decorative metal gates.
 - 2.25m tall rubble stone wall with concrete capping with 1.3m tall galvanised and PPC decorative metal pedestrian gate.
 - 2.1m tall green plastic coated weld-mesh fencing (boundary to be confirmed).
 - 0.9m tall timber-clad formwork (for built-in timber bench seating).

- Symbols**
- Trees (set in grilles in areas of hard landscaping).
 - Cycle stands.
 - Bollards with integrated lighting.
 - S** Built-in timber bench seating.
 - P** Timber formed raised planter (cladding and profile to match building cladding).
 - W** Proprietary water feature.
 - B** Proprietary bird table.
 - C** Proprietary combined bench and raised planter street furniture.
 - R** Refuse/recycle stores to be 1.2m tall timber clad enclosures (cladding and profile to match building cladding) with timber slatted doors. Timber formed raised planter as roof to structure.
 - M** Movable wheelchair accessible planter.
 - Green oak pergola structure with integrated galvanised steel rods and cables for plant growth.

pentan
architects

22 Cathedral Road
Cardiff CF11 9LJ
t: 029 2030 9010
info@pentan.co.uk

| | | | |
|---------------|----------------------|-------------|--------------|
| Project | Crick Road Care Home | Date | 10/05/2018 |
| Client | Monmouthshire CC | Scale | 1 : 200 @ A1 |
| Drawing Title | Site Plan | Drawing No. | 3460 SK 03 |
| | | Rev. | |

NOTES Do not scale. All dimensions are in millimetres unless stated otherwise



Block A- East Elevation
1:100



Block A- West Elevation
1:100



Block A- North Elevation
1:100



Block A- South Elevation
1:100



Block B - East Elevation
1:100



Block B - West Elevation
1:100



Block B - South Elevation
1:100



Block B - North Elevation
1:100



